

N.W. 1/4
SECTION 17, T.6N., R1W., S.L.B. & M.

TAXING UNIT: 25

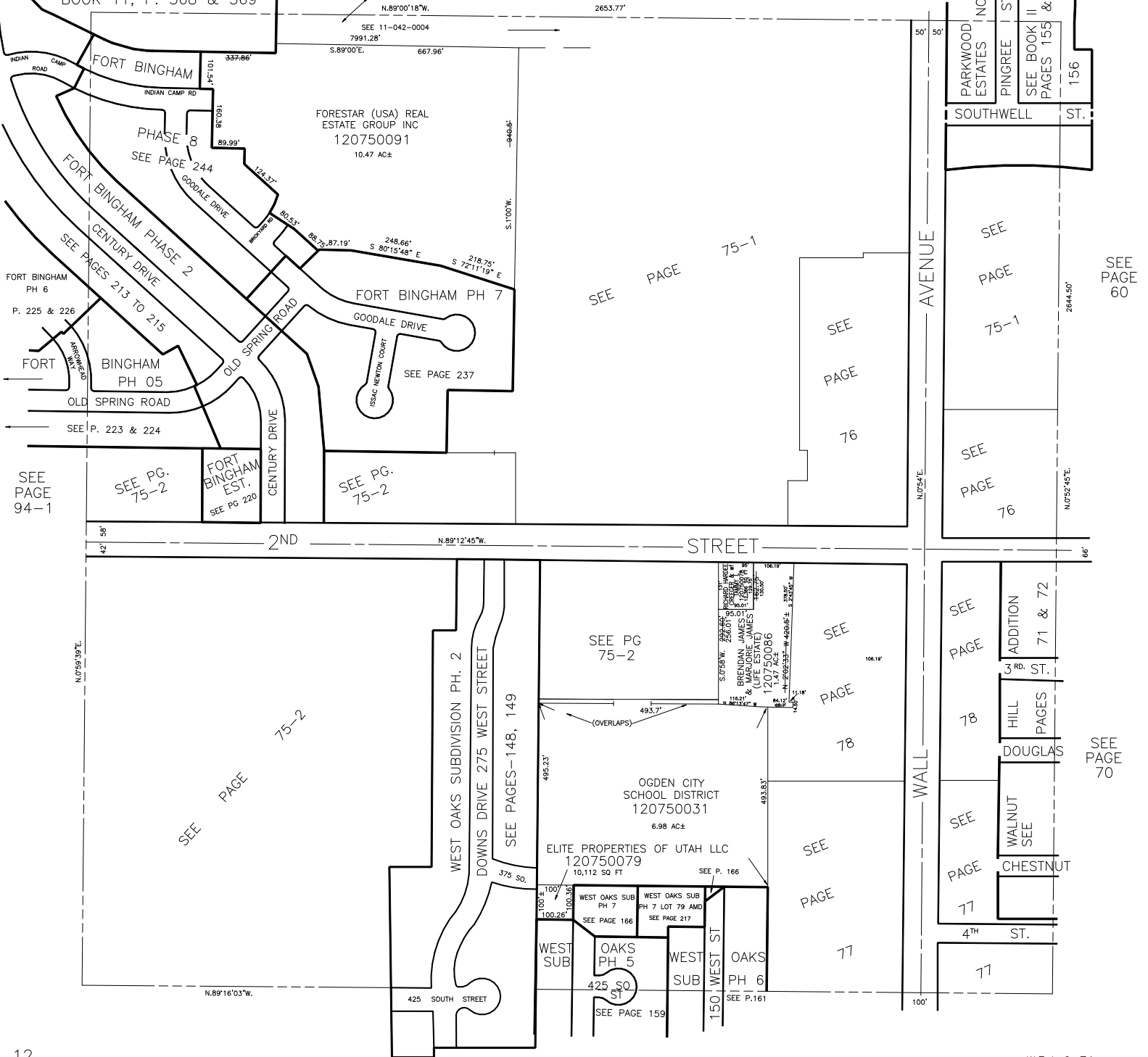
IN OGDEN CITY
SCALE 1" = 200'

ALSO SEE PAGES 75-1, 2
SEE BOOK II, PAGE 43

FORT BINGHAM PH 4

SEE BOOK II, PAGE 42

BOOK 11, P. 368 & 369



SEE PAGE 94-1

SEE PG. 75-2

FORT BINGHAM EST. SEE PG. 220

SEE PG. 75-2

SEE PAGE 75-1

SEE PAGE 76

SEE PAGE 75-1

SEE PAGE 76

SEE PAGE 60

SEE PAGE 75-2

SEE PG 75-2

SEE PAGE 78

SEE PAGE 78

SEE ADDITION 71 & 72 HILL PAGES

SEE PAGE 77

SEE WALNUT CHESTNUT

SEE PAGE 70